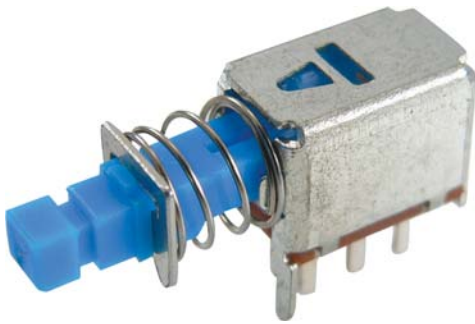


# M SERIES

## PUSH BUTTON SWITCH



### Feature -

1A, 30 V DC for Power  
2 poles & 4 poles circuitry

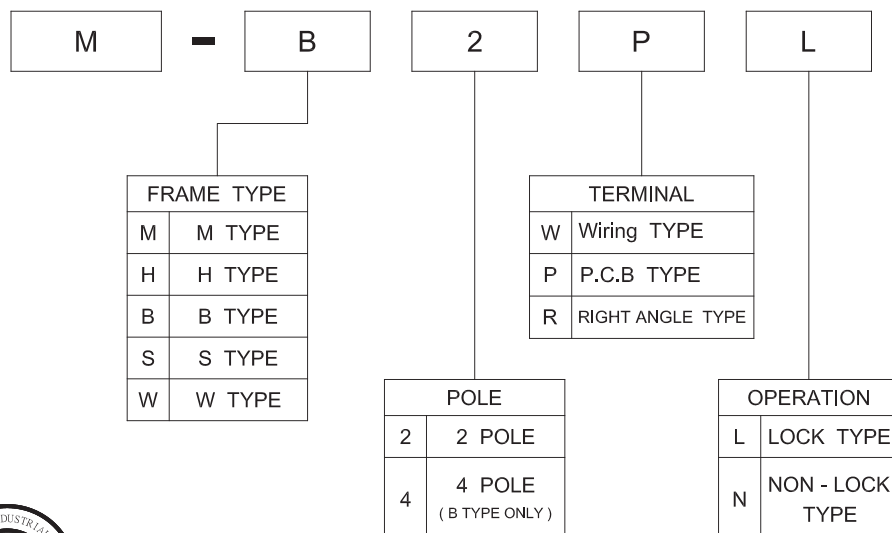
### Application -

home electronic equipment  
industrial electronic equipments  
audio system  
ADSL modem  
wireless AP

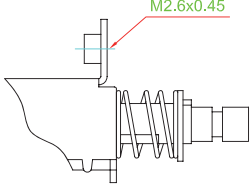
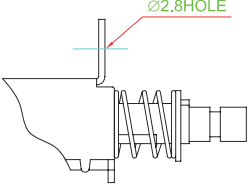
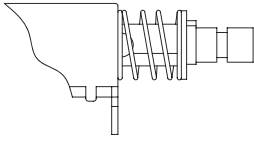
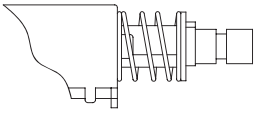
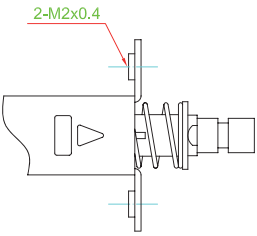
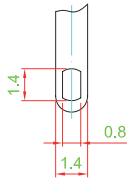
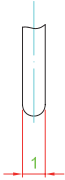
## ► SPECIFICATIONS

SWITCH SPECIFICATIONS	
POLE - POSITION	1P2T , 2P2T , 4P2T , Momentary and Lock Type are available
CONTACT RATING	30 V DC , 0.3 A 30 V DC , 1 A
CONTACT RESISTANCE	50 mΩ MAX. 1.5 V DC ; 100 mA , by Method of Voltage DROP
INSULATION RESISTANCE	100 MΩ MIN. 500 V DC
DIELECTRIC STRENGTH	Breakdown is not Allowable ; 500 V AC for 1 Minute
OPERATING FORCE	450 ± 150gf
OPERATING LIFE	10,000 cycles
OPERATING TEMPERATURE RANGE	-20°C ~ 70°C
TOTAL TRAVEL	3.5 ± 0.3 mm

## ► HOW TO ORDER

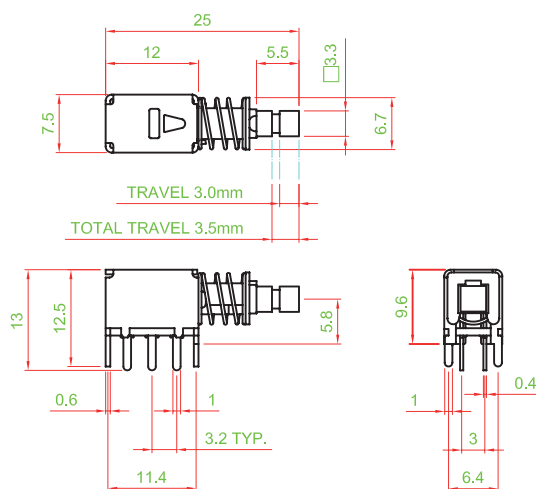
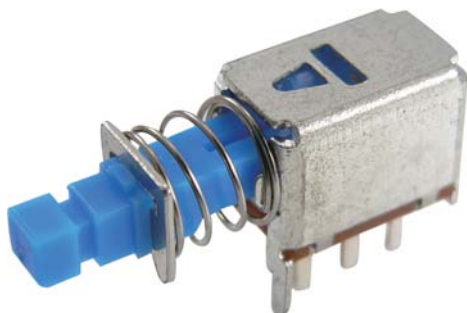


## ► FRAME TYPE & TERMINAL TYPE

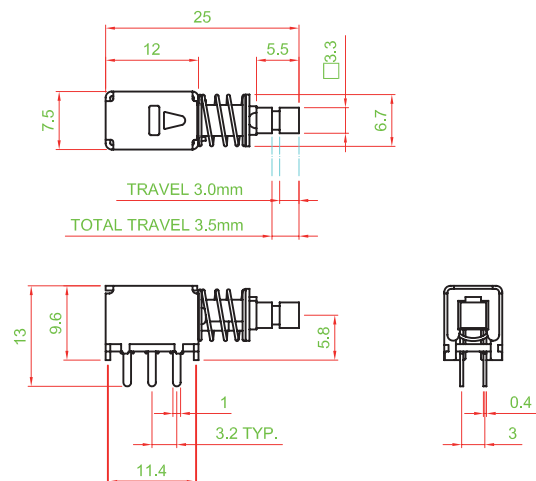
M TYPE	H TYPE	B TYPE	
			
S TYPE	W TYPE	TERMINAL TYPE	
		W TYPE	P TYPE
			

## ► DIMENSION

M - B2PN



M - S2PN

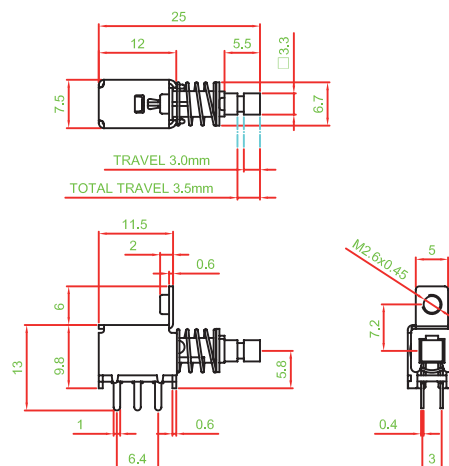
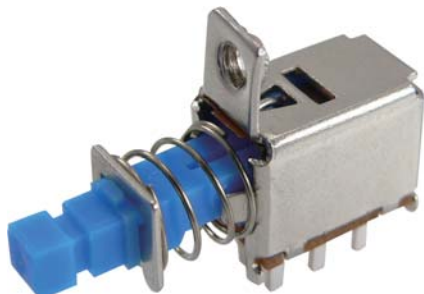


# M SERIES

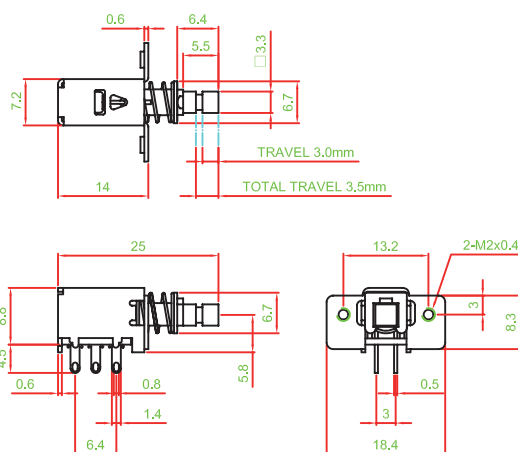
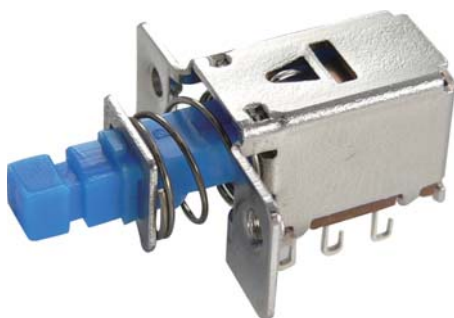
## PUSH BUTTON SWITCH

### ► DIMENSION

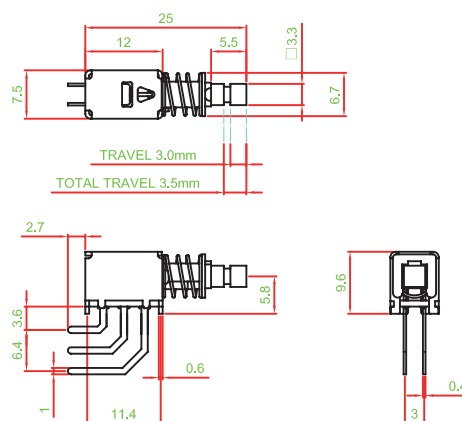
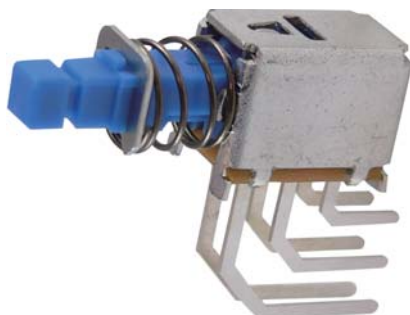
M - M2PL



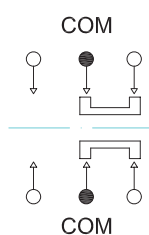
M - W2WL



M - S2RL

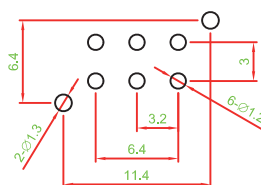


### ► SCHEMATIC

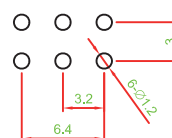


### ► P.C.B LAYOUT

FRAME B TYPE

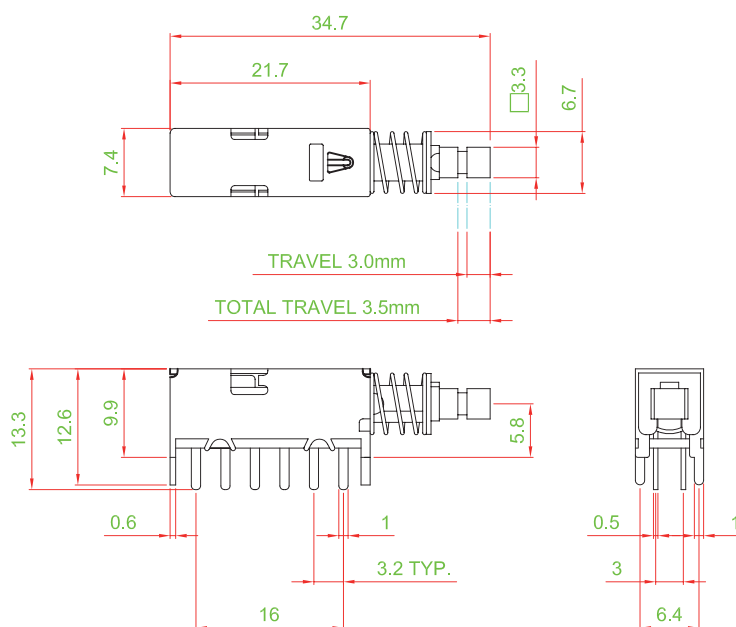
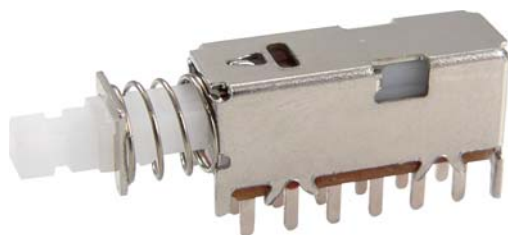


TERMINAL P & R TYPE

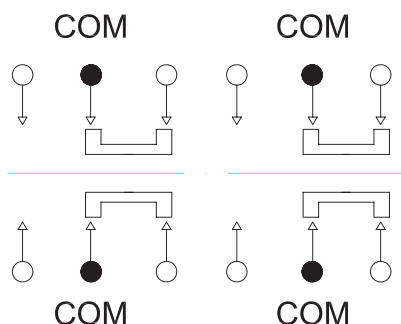


### ► DIMENSION

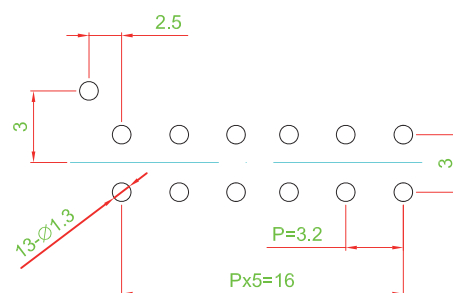
M - B4PL



### ► SCHEMATIC



### ► P.C.B LAYOUT



### ► MATERIAL

- ACTUATOR : PA + GF
- TERMINAL : BRONZE SILVER PLATING
- FRAME : STEEL PLATE , TIN PLATING
- SPRING : STAINLESS STEEL

### ► UNIT WEIGHT

- M - M2WL : 2.6 ± 0.05 g / pc
- M - H2PN : 2.5 ± 0.05 g / pc
- M - B2PL : 2.5 ± 0.05 g / pc
- M - S2PL : 2.4 ± 0.05 g / pc
- M - W2WL : 2.9 ± 0.05 g / pc